

Sophomore Classroom Instruction



DESTINATION: GRADUATION



MJHS Counseling Department

January 2025





MR. ANTHONY DECOSTA
LAST NAMES: A-COQ
ANTHONY.DECOSTA1@ATLANTA.K12.GA.US



 DECOSTA



MS. SAKARI BALAM
LAST NAMES: COR-HARP
SAKARI.BALAM@ATLANTA.K12.GA.US



 BALAM



MS. KRISTIN GRESHAM
LAST NAMES: HARQ-MCE
KRISTIN.GRESHAM@ATLANTA.K12.GA.US



 GRESHAM



MS. KEELY HARRIS
LAST NAMES: MCF-SIL
KEELY.HARRIS@ATLANTA.K12.GA.US



 HARRIS

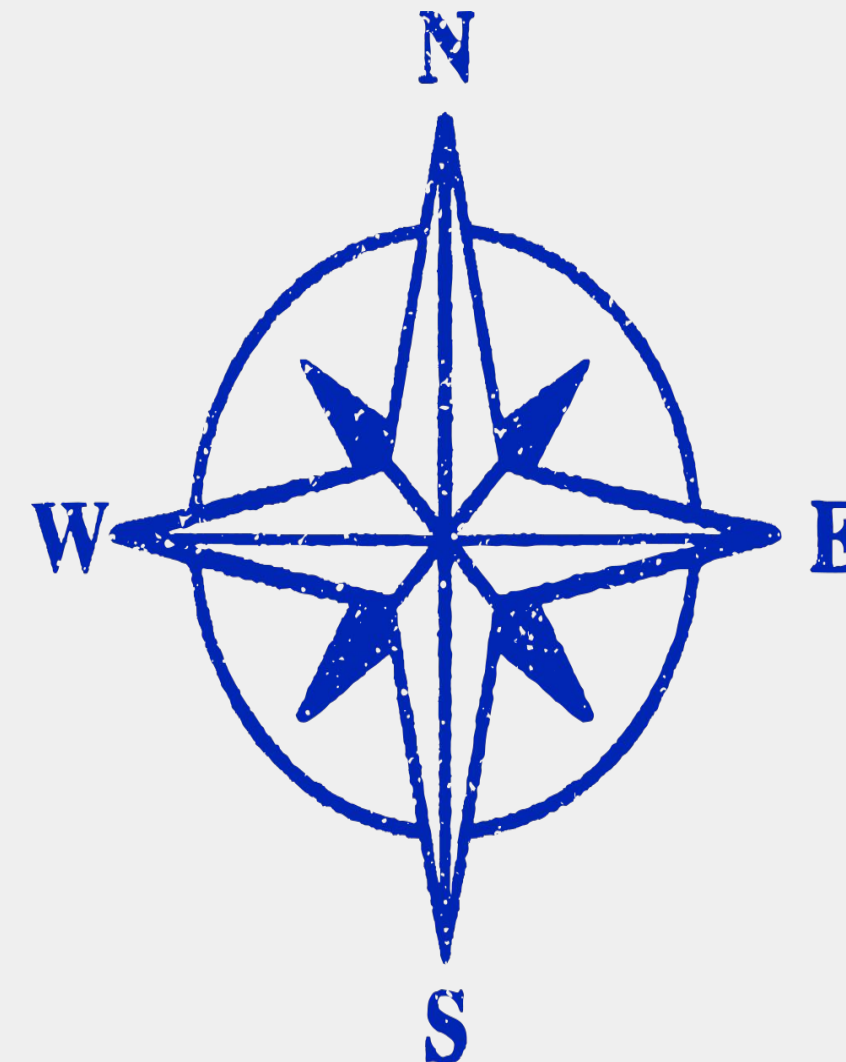


DR. LOLA AZUANA
LAST NAMES: SIM-Z
LAZUANA@ATLANTA.K12.GA.US



 AZUANA

**Your counselor is here to
support you on your
journey to graduation!**





AGENDA

1

APS Graduation
Requirements & Community
Service

2

College Planning &
Exploration

3

Academic Rigor &
College Board

4

HOPE/Zell Miller Scholarship
& GA Futures

5

Understanding Your GPA
& Transcript Review

6

4-Year Academic Planning
& 1:1 Counseling Meetings

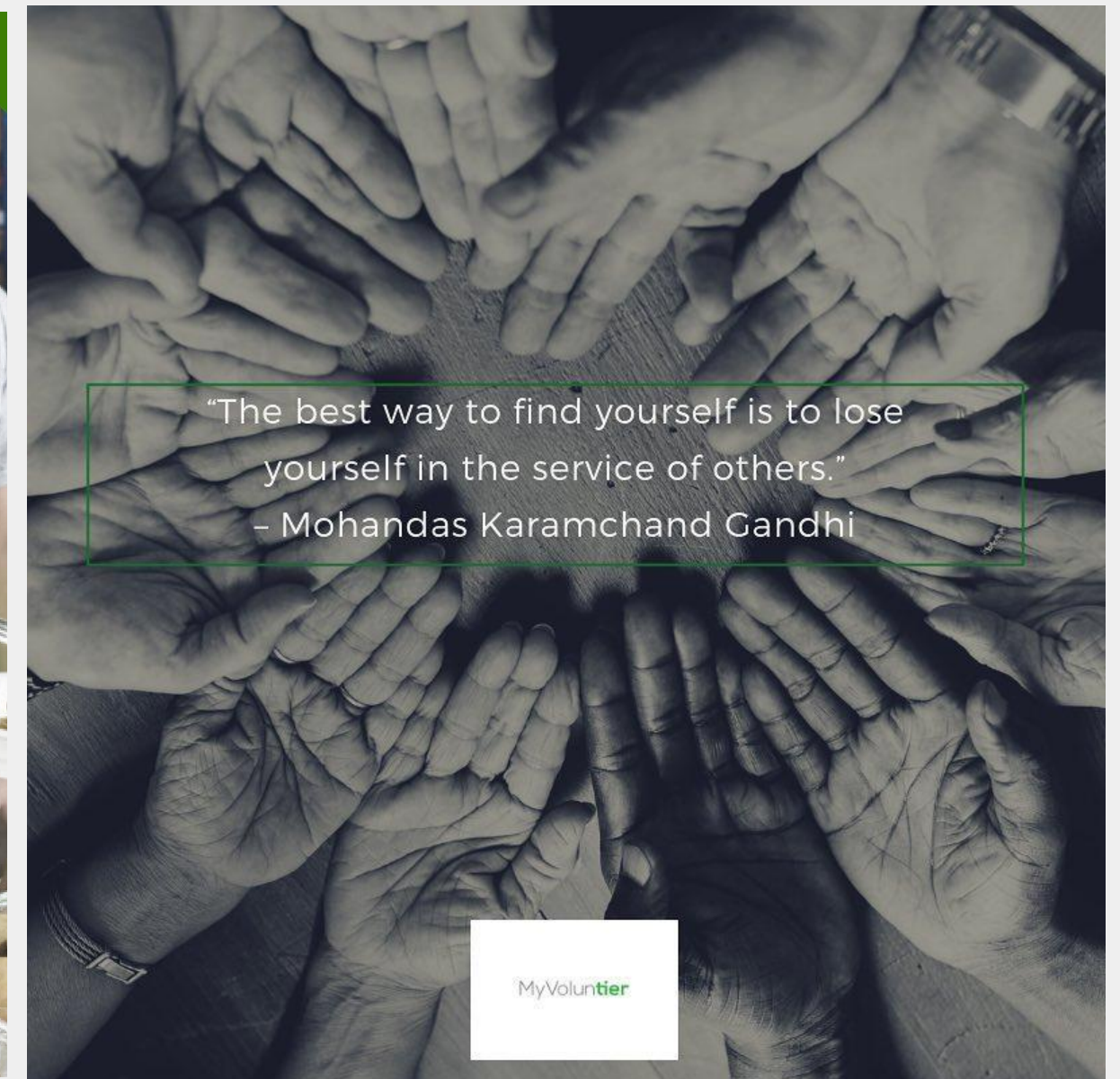
APS GRADUATION REQUIREMENTS



ENGLISH LANGUAGE ARTS (4 UNITS)	1 unit Ninth Grade Literature/Composition 1 unit American Literature/Composition 2 units English Language Arts core, including IB/AP/DE* courses
MATHEMATICS (4 UNITS)	1 unit GSE Algebra I (or equivalent) 1 unit GSE Geometry (or equivalent) 1 unit GSE Algebra II (or equivalent) 1 unit Mathematics core, including IB/AP/DE* courses
SCIENCE (4 UNITS)	1 unit Biology 1 unit Physical Science or Physics 1 unit Chemistry or Earth Systems or Environmental Science or an AP/IB/DE course 1 unit Science core, including IB/AP/DE* courses
SOCIAL STUDIES (3 UNITS)	1 unit U.S. History 1 unit World History 1/2 unit Economics/Business/Free Enterprise 1/2 unit American Government/Civics
MODERN LANGUAGE (2 UNITS)	2 units of the same modern language or Latin or American Sign Language, or computer science with an emphasis on coding and programming
PHYSICAL EDUCATION/ HEALTH (1 1/2 UNITS)	1/2 unit Personal Fitness 1/2 unit PE elective 1/2 unit Personal Health
ELECTIVES (5 UNITS)	3 of 5 units related to the same thematic pathway
COMMUNITY SERVICE (1/2 UNIT)	75 hours of community service
TOTAL 24 CREDITS	

APS COMMUNITY SERVICE REQUIREMENTS

**Class of
2027:
75 Hours**



tiersphere

10th Grade College Planning



Start Thinking About
College - It's Not Too Early!

Take The Right Classes

Focus On Your Grades

6 EASY STEPS

1

It's definitely not too early to start planning for college in 10th grade. Much of what you do in 10th grade will impact your college applications and influence admissions decisions. Also, if you make attending college a goal while you're a 10th grader, you'll be more likely to stay on the right track and eventually enroll!

2

Developing a solid academic track record is the most important part of 10th grade college planning. The classes you take will greatly influence your college options. Talk to your counselor to ensure that you're on a college prep track. Also, you can look at various college websites to see the course requirements for admission. **Colleges will evaluate you based on the classes you've taken.**

3

Your sophomore year grades do matter for college admissions. Most colleges will focus on your sophomore and junior year grades when making admissions decisions. To colleges, your grades are a reflection of your work ethic and ability to succeed in college.

10th Grade College Planning



Stay (or Get) Involved
in Extracurriculars

Start Preparing for the
SAT/ACT

Research Colleges

6

**EASY
STEPS**

4

Other than your grades and test scores, your extracurricular activities probably have the biggest influence on the quality of your college applications. Colleges, especially top colleges, want their students to have exceptional achievements outside of the classroom, and they're looking for individuals who use their leisure time to pursue their passions.

5

Starting to prepare for the SAT/ACT in your sophomore year will give you ample time to master the concepts and strategies that will allow you to reach your target score. We recommend that you take the SAT/ACT for the first time by the fall of your junior year. If you familiarize yourself with key concepts and take a few practice tests during your sophomore year, you'll have a good head start on your studying.

6

You should start thinking about what you're looking for in a college. What do you want to study? Would you be more comfortable at a large school or a small liberal arts college? What geographic region do you want to be in? You can play around with college finders to get an idea of different schools that may be good for you.

What is Academic Rigor?

Why is it important?

01 Simply put, rigor is the academic or intellectual challenge of a class. The more difficult the class, the more rigorous it is.

02 In essence, a rigorous class prepares the student by teaching them (and having them exercise) skills useful in school, the business world, and in life.

03 There are multiple reasons that “academic rigor” might make a student shy away.

04 Instead of looking at a rigorous schedule with dread, think of it as a challenge.



YOU
CAN DO
HARD
THINGS

Which classes are rigorous?

Honors
Advanced Placement (AP)
International Baccalaureate (IB)
Dual Enrollment (DE)

What Classes Are Considered Rigorous?

Advanced Placement (AP)

AP classes are perhaps the most well-known source of rigor. AP takes the material and requirements up a few notches from the mandatory core classes. With students learning more, producing research-based projects, reading more in-depth, and taking harder tests it is a shining example of academic rigor.

Dual Enrollment (DE)

DE classes are college-level courses that often translate into college credit hours upon completion. Not only do they show rigor, but they also help with your overall credit hour requirement in the long run—win-win!

International Baccalaureate (IB)

Some confuse AP and IB courses, but IB programs can be started as early as elementary school. There are varying levels of IB classes available in high school, all of which end with a test and a certificate. IB takes a different approach to standardized learning and allows students to think critically.

- IB Career-related Program [CP] vs IB Diploma Program [DP]





Accelerated Career pathways offer qualified students a unique path to high school graduation. Students choose to simultaneously earn a high school diploma and a college Associate of Applied Science Degree, Technical Diploma, an approved program that leads to licensure, or two (2) approved Technical Certificates of Credit (TCC's) in a specific career pathway.

HIGH SCHOOL REQUIREMENTS

- 2 English Courses (including EOC course)
- 2 Mathematics Courses (including EOC course)
- 2 Science Courses (including EOC course)
- 2 Social Studies Courses
- 1 Health/Fitness Course

Students may replace one Social Studies course with an additional Math course. Local School Districts may NOT add additional requirements above the state minimum.

COMPLETE ANY OF THE FOLLOWING TECHNICAL COLLEGE CREDENTIALS

- 2 Approved Technical Certificates or
- A Technical Diploma or
- A Program Leading to Licensure or
- An Associates of Applied Science Degree

AAS and Diploma program offerings and placement criteria vary by college. Please contact your TCSG College for program availability and eligibility.

Why do you need an account?

PSAT

See a detailed score report and link to KHAN Academy for free, personalized SAT Prep.

BIG FUTURE

College exploration and planning resources at your fingertips! Win scholarship money just from using the site!

AP CLASSROOM

Access resources and practice materials for your AP classes.

You may already have a College Board account... Use your personal email address to try the password reset option first!

Creating a College Board Account

With a College Board account, you can:

- ✓ **ACCESS** your PSAT/NMSQT®, PSAT® 10, PSAT® 8/9, SAT®, and AP® scores online. Send your SAT and AP scores to the colleges of your choice.
- ✓ **REGISTER** for the national weekend administration of the SAT and College-Level Examination Program® (CLEP®) exams.
- ✓ **PRINT** your SAT Admission Ticket for the national weekend administration of the SAT or your CLEP Registration Ticket.
- ✓ **MANAGE** your personal college list.
- ✓ **SAVE** your scholarship searches.
- ✓ **COMPARE** costs at colleges that interest you.

Sign-Up Instructions

- 1 Before you get started have your:**
 - Email address
 - Expected high school graduation date (month and year)
 - High school name
- 2 Go to collegeboard.org**
- 3 Click on "Sign Up"**
- 4 Select "I am a Student"**
- 5 Create a username and password**
 - Your username should have 6–15 characters and be made up of letters and numbers.
 - Your password must be 7–15 characters with at least one number and one letter.
 - Choose a security question and provide an answer you can easily remember.

What are the HOPE & Zell Miller Scholarships?

HOPE

- 3.0 GPA in core classes
- Funding depends on the school with award limits
 - Private vs. Public
 - 80% (or more) tuition

BOTH

- Required credits for 4 classes that meet the HOPE/Zell rigor requirement.
- Complete the FAFSA



Zell Miller

- 3.7 GPA in core classes
- SAT=1200 combined (no superscore) or ACT=26 or valedictorian or salutatorian
- Award limits
 - Public = FULL tuition
 - Private = tuition assistance



HOPE Career Grant

TUITION-FREE Programs in 18 In-Demand Career Opportunities

- Automotive Technology
- Aviation Technology
- Certified Engineer Assistant
- Commercial Truck Driving
- Computer Programming
- Computer Technology
- Construction Technology
- Diesel Equipment Technology
- Early Childhood Care & Education

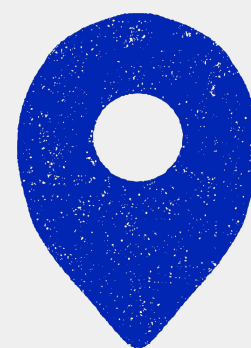
REQUIREMENTS

High School graduate
Attend a Technical School in Georgia
Maintain a 2.0 GPA
while in the program

- Electrical Lineman Technology
- Health Science
- Industrial Maintenance
- Logistics/ Transportation Technology
- Movie Production Set Design
- Practical Nursing
- Precision Manufacturing
- Welding and Joining Technology
- Law Enforcement and Criminal Justice

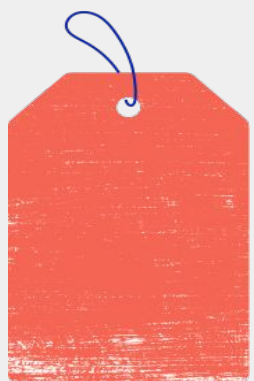


What is a 4-Year Academic Plan?

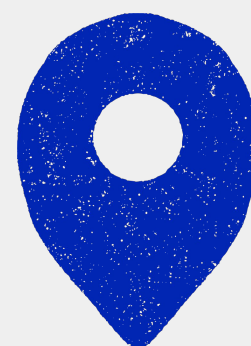


- A four-year plan is a schedule that outlines every course required to graduate in each semester of the four years of high school.
- Each student will meet with their counselor to review their course plan and select courses for the following school year.

<div>2022-2023</div> <div>Maynard Jackson High School (0186)</div> <div>801 Glenwood Avenue, SE, Atlanta GA 30316</div> <div>Generated on 10/03/2022 12:58:09 PM Page 1 of 2</div>		<div>Course Plan Report</div> <div></div> <div>Program: HS Grad Reqs - MJHS College Prep (Graduation)</div> <div>Counselor:</div> <div>Approved by parent/legal guardian: No</div>		
Grade: 08 1.0 / 0.0	Grade: 09 8.0 / 5.5	Grade: 10 8.0 / 6.0	Grade: 11 8.0 / 6.0	Grade: 12 8.0 / 6.5
ENGLISH/LANGUAGE ARTS (4.0 / 4.0)				
0.0 / 0.0	1.0 / 1.0 23.0610001 9th Grade Lit/Comp - 0.5 23.0610002 9th Grade Lit/Comp - 0.5	1.0 / 1.0 23.0620005 10th Lit/Comp - 0.5 23.0620006 10th Lit/Comp - 0.5	1.0 / 1.0 23.0530001 AP Lang/Comp - 0.5 23.0530002 AP Lang/Comp - 0.5	2.0 / 1.0 23.0460001 Speech/Forensics I - 0.5 23.0460002 Speech/Forensics I - 0.5 23.0520001 British Lit/Comp - 0.5 23.0520002 British Lit/Comp - 0.5
MATH (4.0 / 4.0)				
0.0 / 0.0	2.0 / 1.0 27.0990001 GSE Algebra I - 0.5 27.0990002 GSE Algebra I - 0.5 27.0997001 GSE Alg I Supp - 0.5 27.0997002 GSE Alg I Supp - 0.5	2.0 / 1.0 27.0991005 GSE Geometry - 0.5 27.0991006 GSE Geometry - 0.5 27.0998005 GSE Geom Supp - 0.5 27.0998006 GSE Geom Supp - 0.5	1.0 / 1.0 27.0992001 GSE Algebra II - 0.5 27.0992002 GSE Algebra II - 0.5	1.0 / 1.0 27.0850001 AMDM - 0.5 27.0850002 AMDM - 0.5
SCIENCE (4.0 / 4.0)				
0.0 / 0.0	1.0 / 1.0 26.0120001 Biology - 0.5 26.0120002 Biology - 0.5	1.0 / 1.0 26.0611005 Env Sci - 0.5 26.0611006 Env Sci - 0.5	1.0 / 1.0 40.0810001 Physics I - 0.5 40.0810002 Physics I - 0.5	1.0 / 1.0 26.0730001 Anatomy/Physi - 0.5 26.0730002 Anatomy/Physi - 0.5
SOCIAL STUDIES (4.5 / 3.0)				
0.0 / 0.0	0.5 / 0.5 45.0570001 Am Gov/Civ - 0.5	2.0 / 1.0 45.0150005 Psychology - 0.5 45.0310005 Sociology - 0.5 45.0830005 World History - 0.5 45.0830006 World History - 0.5	1.0 / 1.0 45.0810001 U S History - 0.5 45.0810002 U S History - 0.5	1.0 / 0.5 45.0120001 Current Issues - 0.5 45.0610001 Econ/Bus/Free Enterprise - 0.5
PHYSICAL ED/HEALTH (2.0 / 0.0)				
0.0 / 0.0	1.0 / 0.0 17.0110001 General Health - 0.5 36.0510001 Personal Fitness - 0.5	0.0 / 0.0	1.0 / 0.0 36.0220001 Lifetime Sports - 0.5 36.0270001 Rec Games - 0.5	0.0 / 0.0
MODERN LANGUAGE (2.0 / 2.0)				
1.0 / 0.0 62.0110001 Chinese 1 - 0.5 62.0110002 Chinese 1 - 0.5	1.0 / 0.0 62.0120001 Chinese II - 0.5 62.0120002 Chinese II - 0.5	0.0 / 1.0	0.0 / 1.0	0.0 / 0.0
CAREER/MOD LANG/FINE ART (7.0 / 1.0)				
0.0 / 0.0	1.0 / 0.0 48.5610001 Graphic Design - 0.5 48.5610002 Graphic Design - 0.5	2.0 / 0.0 10.5181005 Audio-Video Tech & Film I - 0.5 10.5181006 Audio-Video Tech & Film I - 0.5 48.5620005 Graphic Design/Product - 0.5 48.5620006 Graphic Design/Product - 0.5	2.0 / 0.0 10.5191001 AV Tech/Film II - 0.5 10.5191002 AV Tech/Film II - 0.5 48.5280001 Adv Graphic Design - 0.5 48.5280002 Adv Graphic Design - 0.5	2.0 / 1.0 10.5141001 Broadcast Video Production App - 0.5 10.5141002 Broadcast Video Production App - 0.5 53.0941001 Beg Keyboard Techniques I - 0.5 53.0941002 Beg Keyboard Techniques I - 0.5



Reviewing Your HS Transcript



A transcript is a complete summary of a student's academic record that includes:

- Every HS course attempted
- When and where each course was taken
- Final grade for each course
- Credits earned (per class, semester and total)
- Overall GPA (average of all final semester grades)
- Class rank

Student Information			
Student Number:	2031309	Grade:	11
Birthdate:	06/27/2007	Gender:	M
State ID:	5077273464		
Guardian:	Princetta Miller		
Diploma Type:			
Diploma Date:			
GPA Summary			
Cumulative GPA (Weighted)	99.313		
Cumulative GPA (Unweighted)	98.063		
4.0 GPA			
Cumulative GPA (Weighted)	4.125		
Cumulative GPA (Unweighted)	4.000		

#0186 Maynard Jackson High School			
Course	Mark	Weight	Credit
2022-2023 Grade 10 Term 4			
23.2620042 10th Lit/Comp H	96	0.5000	0.5
45.2570041 Am Government/ Civ H	100	0.5000	0.5
11.2160002 AP Computer Sci A	109	0.5000	0.5
27.2740002 AP Statistics	109	0.5000	0.5
45.0811002 AP World History	110	0.5000	0.5
45.2811002 AP World History	110	0.5000	0.5
40.2510042 Chemistry I H	100	0.5000	0.5
70.0410001 Comm Serv Learn	5	0.5000	0.5
11.4150002 Intro Dig/Tech	100	0.5000	0.5
60.0730002 Spanish III	100	0.5000	0.5
Credit: 5.000 GPA: 103.778 U/W GPA: 99.333			
Comments			
*Grade Legend---A=90-110, B=80-89, C=70-79, F=0-69 S=Satisfactory			
*10 points are added to the final numeric grade for each AP, IB, or core content / world language and dual enrollment courses that is passed with a grade of 70 or above.			

#9990 Atlanta Virtual Summer Academy			
Course	Mark	Weight	Credit
2022-2023 Grade 10 Term 1			
36.3110001 General PE 1	97	0.5000	0.5
27.3974001 GSE Pre-Calc V A	95	0.5000	0.5
Credit: 1.000 GPA: 96.000 U/W GPA: 96.000			

Calculating Your GPA

Grade Point Average is simply the average of all grades received in HS (100-point Scale)

SEMESTER 1

• Chemistry (A)	82
• 10th Grade Lit H (A)	92
• World History	75
• Spanish III (A)	78
• A/V Tech II (A)	89
• Psychology	69
• Geometry (A)	85
• Journalism (A)	90

660
/8

GPA 82.5

SEMESTER 2

▪ Chemistry (B)	85
▪ 10th Grade Lit H (B)	93
▪ World History	95
▪ Spanish III (B)	74
▪ A/V Tech II (B)	88
▪ Sociology	90
▪ Geometry (B)	88
▪ Journalism (B)	93

706
/8

GPA 88.25



CULMULATIVE GPA

$$(82.5 + 88.25)/2 = 85.375$$

Add the GPA from each semester and divide by the number of semesters to get your CUMULATIVE GPA.

CONVERSION
CHART

A = 4
(90 - 100)

B = 3
(80 - 89)

C = 2
(70 - 79)

F = 0
(0 - 69)

A = 5
(101-110)

Converting Your GPA to the 4.0 Scale

The 4.0 Scale GPA is the one most often used by colleges, scholarships, etc.

SEMESTER 1

• Chemistry (A)	82	3
• 10th Grade Lit H (A)	92	4
• World History	75	2
• Spanish III (A)	78	2
• A/V Tech II (A)	89	3
• Psychology	69	0
• Geometry (A)	85	3
• Journalism (A)	90	4
	<hr/>	
	660	21
	/8	/8
GPA	82.5	2.625

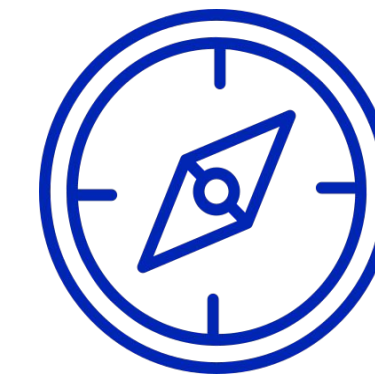
SEMESTER 2

▪ Chemistry (B)	85	3
▪ 10th Grade Lit H (B)	93	4
▪ World History	95	4
▪ Spanish III (B)	74	2
▪ A/V Tech II (B)	88	3
▪ Sociology	90	4
▪ Geometry (B)	88	3
▪ Journalism (B)	93	4
	<hr/>	
	706	27
	/8	/8
GPA	88.25	3.375

CULMULATIVE GPA

$$(2.625 + 3.375)/2 = 3.15$$

Add the GPA from each semester and divide by the number of semesters to get your CUMULATIVE 4.0-scale GPA.



Why an 80.0 GPA \neq a 3.0 GPA

STUDENT 1

Class Grade	Converted to 4.0 Scale
92	4
70	2
88	3
69	0
80.0 GPA on a 100pt scale	2.25 GPA on a 4.0 scale

STUDENT 2

Class Grade	Converted to 4.0 Scale
85	3
75	2
85	3
75	2
80.0 GPA on a 100pt scale	2.50 GPA on a 4.0 scale

STUDENT 3

Class Grade	Converted to 4.0 Scale
90	4
70	2
90	4
70	2
80.0 GPA on a 100pt scale	3.0 GPA on a 4.0 scale

PLEASE JOIN THE CLASS OF CLASS OF 2027

GOOGLE CLASSROOM

rqkzgst

MJHS ELECTIVES MENU

AP African American Studies

AP Biology

AP Environmental Science

AP Government

AP Psychology

Entrepreneurship

Fundamentals of Music Industry

Guitar

Individual Law/.Ethnic Studies

Intro to Music Technology

Journalism

Music Appreciation

One Goal (College Success)

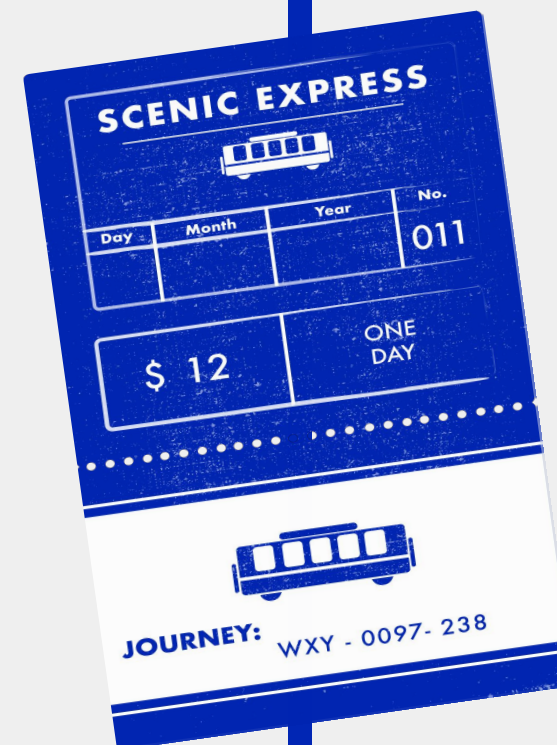
Piano

Psychology/Sociology

Sculpture

Speech/Forensics

Theatre Marketing



Choosing Your Electives

1

Consider the rigor of your
overall schedule!

2

Meet all graduation
requirements (World
Language, PE, etc.)

3

Finish your
PATHWAY!

4

Take classes that align with
your interests/potential career.

5

Explore ACCA
pathway options!

6

Consider if Dual
Enrollment is right for you.